

Input for DCS A-10C

Software section

Summary

About.....	2
How to install « Input for DCS A-10C » device ?.....	3
How to configure Input for DCS A-10C software ?.....	5
Files.....	5
Register.....	5
Shortcuts.....	5
export.lua modification.....	6
How to change CommPort number ?.....	7
« Input IIC/COM DCS-World » device	7
« Input for DCS A-10C » software.....	7

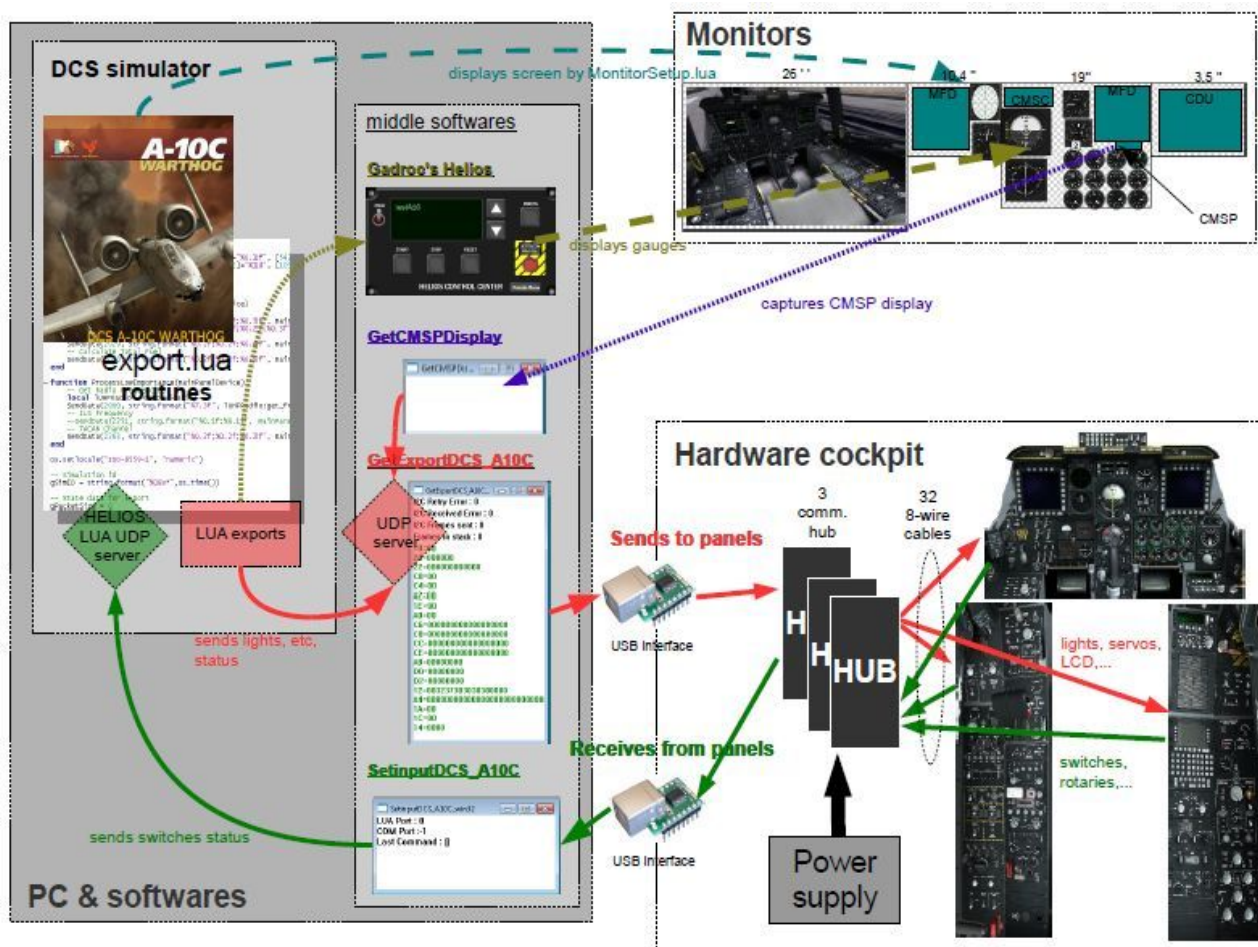
About

« Input for DCS A-10C » is a software used to sends switches status of panels to DCS World.

To send switches status to DCS World, four units are used :

- Tacnworld's panel (*hardware*),
- « Input for DCS World » USB device (*hardware*),
- « Input for DCS A-10C » software (*software*),
- export.lua with Helios modified code (*software*).

The last unit is of course DCS World.

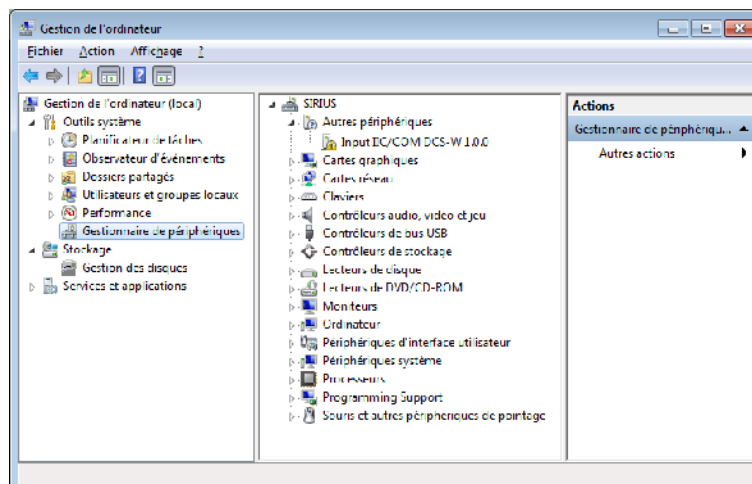


« Input for DCS A-10C » solution is the green way of diagram above.

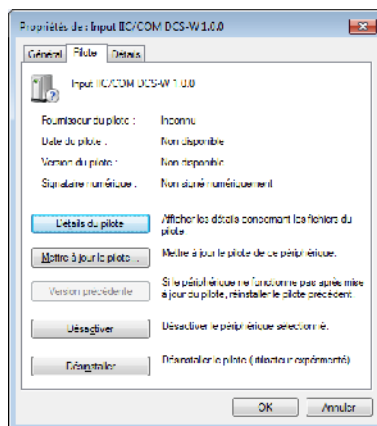
How to install « Input for DCS A-10C » device ?

« Input for DCS A-10C » device is named « Input IIC/COM DCS-World ».

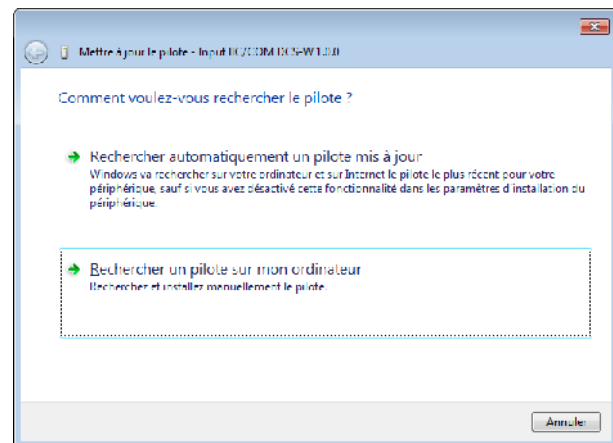
1. Go to « Manage Computer » and « Device manager » with administrator's rights
2. Plug in the « Input for DCS A-10C » USB device.
A new device appears : Input IIC/COM DCS-W 1.0.0



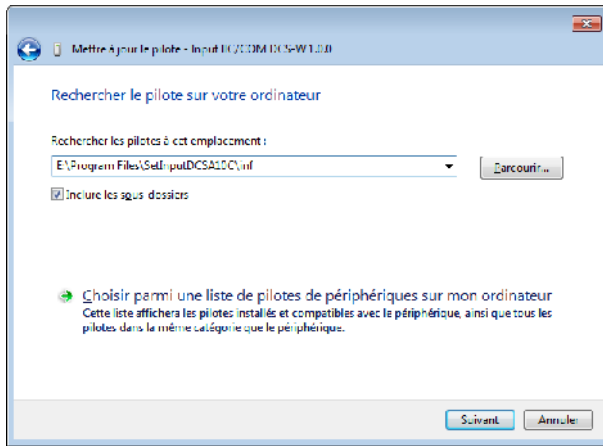
3. Right click on « Input IIC/COM DCS-W 1.0.0 » device, « Driver Tab »



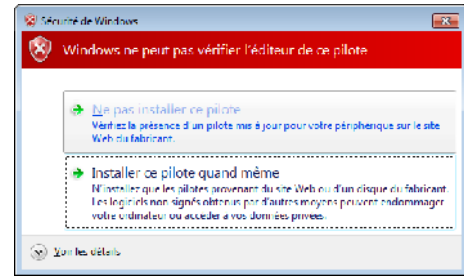
« Update driver » button



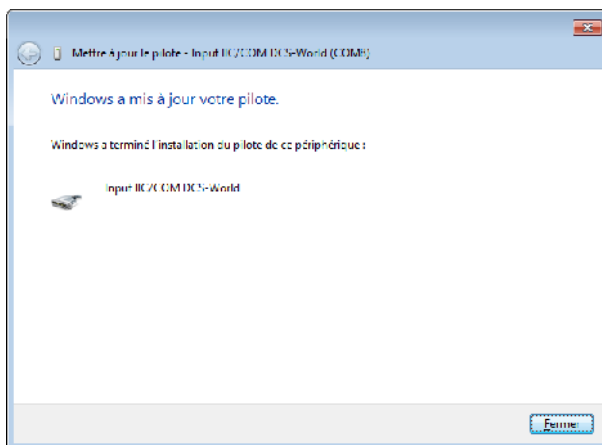
click « Find driver on my computer »



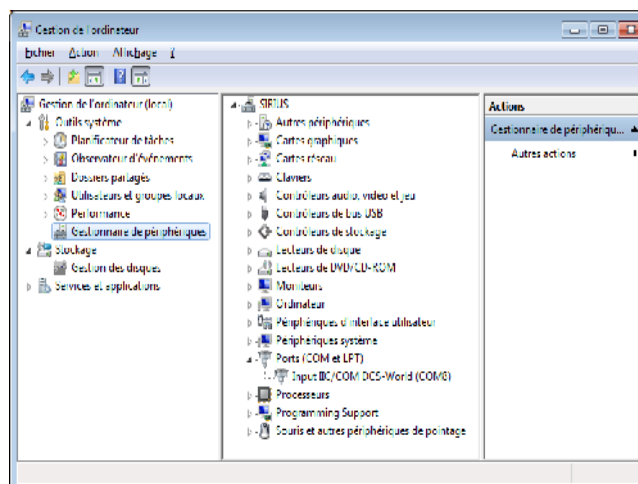
Browse the installation directory of
« Input for DCS A-10C », « next »,



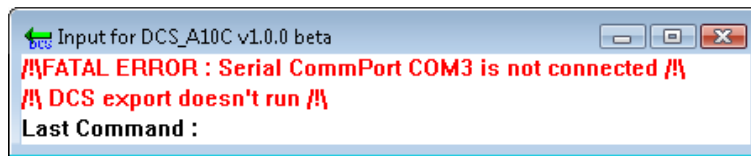
« Install this driver software anyway »



Driver is installed.



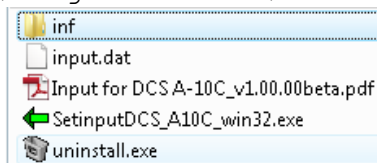
How to configure Input for DCS A-10C software ?



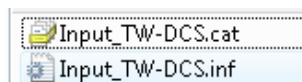
The software runs a UDP server on 10400 UDP port. Be careful with your firewall.

○ Files

C:\Program Files\sSoft\SetInputDCSA10C\



C:\Program Files\sSoft\SetInputDCSA10C\inf\



○ Register

HKEY_LOCAL_MACHINE\SOFTWARE\sSoft\SetInputDCSA10C (MS-Windows 32-bit)
HKEY_LOCAL_MACHINE\SOFTWARE\Wow3264Node\sSoft\SetInputDCSA10C (MS-Windows 64-bit)

Nom	Type	Données
ab (par défaut)	REG_SZ	(valeur non définie)
ab CommPort	REG_SZ	COM3
ab Input File	REG_SZ	C:\Program Files\sSoft\SetInputDCSA10C\input.dat
ab Install_Dir	REG_SZ	C:\Program Files\sSoft\SetInputDCSA10C
ab Log file	REG_SZ	C:\Program Files\sSoft\SetInputDCSA10C\InputDCS.log
ab Log Level	REG_SZ	0

○ Shortcuts

..\Start Menu\Programs\sSoft\Input for DCS A-10C\



- ***export.lua modification***

« Input for DCS A-10C » software works only with Gadroc's Helios export.lua
Edit export.lua and add :

Before (line 8): function ProcessHighImportance(mainPanelDevice)

Add :

```
--Tacnoworld  
LOtm = 0
```

Before (line 65): function LuaExportStop()

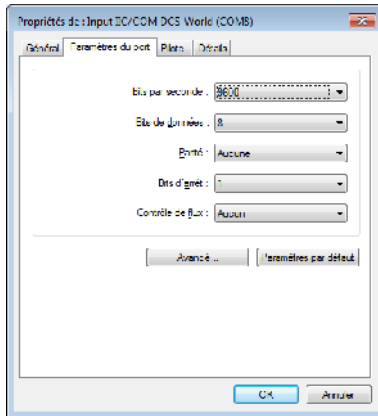
Add :

```
function LuaExportAfterNextFrame()  
--Tacnoworld  
    local tsend = LoGetModelTime()  
  
    if ( tsend > (LOtm+1) ) then  
        socket.try(c:sendto("KEEPALIVE\0", gHost, 10410))  
        LOtm = tsend  
    end  
end  
end
```

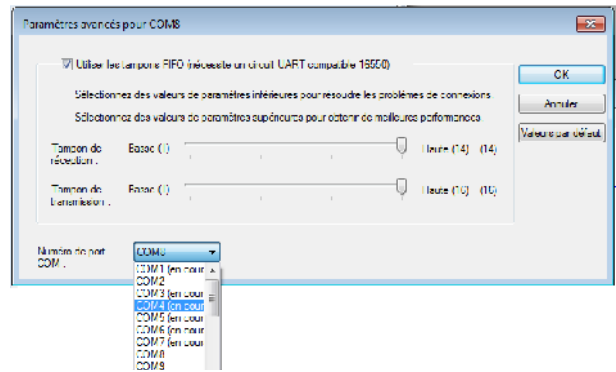
How to change CommPort number ?

- « **Input IIC/COM DCS-World** » device

Right click on « Input IIC/COM DCS-World (COM??)» device, « Port parameters »,



« advanced » button




Choice COM number

- « **Input for DCS A-10C** » software

Edit Register with administrator's rights, modify `CommPort` value :

HKEY_LOCAL_MACHINE\SOFTWARE\sSoft\SetInputDCSA10C (MS-Windows 32-bit)
HKEY_LOCAL_MACHINE\SOFTWARE\Wow3264Node\sSoft\SetInputDCSA10C (MS-Windows 64-bit)

 CommPort

REG_SZ COM3